



# Maple Lane WAAG

<https://maplelane.sd38.bc.ca>

**EARLY WARNING LINE  
FOR ABSENCES**

**604-668-6192**

**Maple Lane WAAG - Sept. 15 - 19, 2025**

## WEEK AT A GLANCE

|           |  |
|-----------|--|
| Monday    |  |
| Tuesday   |  |
| Wednesday | PAC Meeting, 6-7pm (Library; online option)  |
| Thursday  | Meet the Staff Night, 5-6 pm (Note: time change)<br>(5:00 - 5:30 in classes; 5:30 - 6:00 in gym) |
| Friday    |  |

### Maple Lane

#### Elementary School

7671 Alouette Dr.

Richmond, BC

V7A 4P2

#### Neal Campbell

Principal

#### School Schedule:

8:45 – Classes Begin

10:10 - 10:25 - Recess

11:50 - 12:42 - Lunch

2:45 - Dismissal

Sept. 22 - Professional Development Day - No School

Sept. 30 - National Day of Truth and Reconciliation - No School

Oct. 3 - Terry Fox Run (pm)

Oct. 22/23 - Early Dismissal (1:45pm) for Conferences

Oct. 28 - Photo Retake Day

Sept. 29 - Orange Shirt Day

Oct. 1 - Individual Photo Day

Oct. 13 - Thanksgiving - No School

Oct. 24 - Pro-D Day - No School

Nov. 11 - Remembrance Day - No School

## Student and Family Affordability Fund

The School District continues to have funds available to support families who could benefit from financial assistance. We have been allocated funds to support with nutritional needs or any school related expenses (e.g. school supplies, field trip fees, backpacks, footwear etc.)

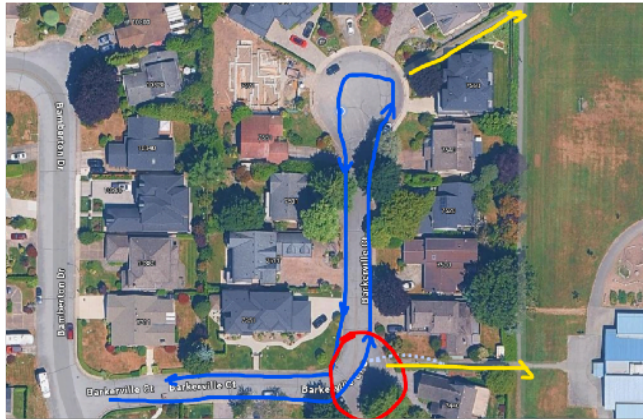
If you would like to request support for your child at school, please reach out to Neal Campbell ([ncampbell@sd38.bc.ca](mailto:ncampbell@sd38.bc.ca)). All requests will be treated with dignity and your privacy will be respected. We want to work with families to ensure that your children have everything they need in order to be successful at school.



## Student Safety: Traffic in Parking Lot

Here are a few gentle reminders about our parking lot when using it for drop off or pick up:

- Please note the accessible parking spots and leave these open for those who need them.
- Please remember that the drop off loop is for immediate drop off and pick up and should not be used as a parking spot.
- Whenever possible, please try to use options other than driving to transport your children to and from school (e.g. walking, biking etc.). This will help clear up congestion and make the parking lot safer for everyone.



## Safety on Barkerville Court

Safety issues have been raised about cars using Barkerville Court to drop off their children. It is safer to go to the end of the cul-de-sac to turn around, rather than u-turning at the bend near the pathway to the school. Please be aware of students who may be crossing the street. Please be mindful of our neighbours on this street and be careful not to block any driveways.

**WEAR A  
HELMET FOR  
SAFETY**



## Bicycle and Wheels Safety

It is wonderful to see so many students travelling to Maple Lane on bicycles and other self-propelled vehicles. As a reminder, wearing a helmet when cycling is a very important safety precaution and is the law in BC. At Maple Lane, we also recommend the use of helmets for scooters, rollerblades and skateboards, and we require all students to wear helmets on school grounds when using these transportation methods.



## Library News



The Maple Lane library will be opening for all classes next week! I am very excited to welcome all students into the library. The library is a space to learn and explore! Next week, students will be borrowing books from the library, the books they borrow will either be kept at school or they will bring them home. Please ensure your child returns their books on time so everyone gets a chance to enjoy them.

Students will have a library block once a week, this is when they will have the opportunity to check out books and to find stories that support their love of reading and learning. The library is more than just books, it's a safe place for students to explore, create and discover.

Can't wait to help students find their next favourite story!

Mrs. Sandhu

Maple Lane Teacher-Librarian

[hsandhu@sd38.bc.ca](mailto:hsandhu@sd38.bc.ca)

### **Tips on how students and families can take care of library books:**

- 1) Keep hands clean when handling and reading books.
- 2) Don't eat or drink near books to prevent damage.
- 3) Use bookmarks instead of folding pages.
- 4) Keep books away from pets and younger siblings.



## Meet the Staff - Thursday, September 18, 5-6 pm

On Thursday, September 18, we are inviting parents and guardians to meet our staff. From 5:00 - 5:30, families can visit the classrooms of their children. At 5:30, a PA announcement will be made to invite families to the gym where Mr. Campbell will introduce the staff and give a short presentation. We look forward to seeing you next week. **Please note: the time has been changed to 5:00 - 6:00 because of a conflict with the meet the staff event at Steveston-London Secondary.**



**PAC  
News**



### Terry Fox Run - Parent Volunteers Needed

Volunteers are needed on the afternoon of October 3 for the Terry Fox Run. Please email Mr. Campbell ([ncampbell@sd38.bc.ca](mailto:ncampbell@sd38.bc.ca)) if you are able to volunteer.

### 2025/26 PAC Executives

**Chairs:** Kate Procter  
**Vice Chair:** Aysha Revell  
**Treasurer:** Michael Boetzkes  
**Secretary:** Cherry Ho

The Maple Lane PAC is always looking for more participants. You can find out more through the school website: <https://maplelane.sd38.bc.ca/parents> or by attending a future PAC meeting.

**Next PAC Meeting:** Wednesday, September 17, 2025, 6:00 pm. This meeting will be in person in the library. An online option will be available. All Maple Lane parents are members of the PAC and are welcome to attend meetings. We hope to see many parents there.



### Updated Website

Have a look at our updated website: <https://maplelane.sd38.bc.ca/>. You can choose your preferred language on the homepage and it will translate attached documents such as this newsletter for you!

