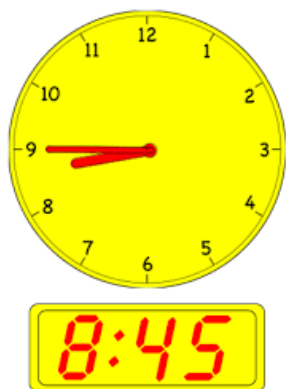


Morning Routines

(8:40 - Warning Bell; 8:45 - Instruction Begins)



To ensure a prompt start to the day, we ask families to arrive by 8:40 am. We know that not every morning can go as planned, however, late arrivals can cause disruption for classes when they are trying to begin instruction. For this reason, we ask for the support of our families with having a smoother and more prompt start to the day.

Students arriving after 8:45, need to sign in at the office before going to their classroom.

Sensory Path

The sensory path has now been completed by artist Jeni Chen. Maple Lane students are enjoying hopping, skipping and jumping all around it. Thank you to the PAC for providing the funds for this project and to Ms. Lin for organizing it.



SchoolCashOnline: Payment for school fees and agendas can now be made through SchoolCashOnline. Thank you to the families who have already paid. Here is the link to pay any outstanding fees: <https://www.schoolcashionline.com/>
If any families are in need of financial support, please contact Mr. Campbell.



PAC News



Maple Lane PAC

Next PAC Meeting: Wednesday, October 11, 6 - 7 pm. This meeting will be in person in the library.

Updated Website

Have a look at our updated website: <https://maplelane.sd38.bc.ca/>. You can choose your preferred language on the homepage and it will translate attached documents such as this newsletter for you!

 Translate



Select Language 